

## GEORGE O'NEIL'S CONTRIBUTION TO ANTHROPOSOPHY, PART II

### HEART-THINKING AND TRANSLATION



By Mark Riccio Ed.D.,  
New York

In my last article (in the January 2010 Portland Branch Newsletter), I pointed out how George used diagrams to highlight the idea-gestalt in Steiner's

books for the practice of heart-thinking. In this article, I discuss the importance of George O'Neil's discovery of the *formal* aspects of Steiner's writing as they would affect methods of translation. Steiner composed his paragraphs and ideas in ways that created polarity and other organic-living relationships. To date, much of George's discovery has gone unheeded by translators. As a result, translators have approached Steiner's work with little regard for the unique integrity of his written 'compositions.' One could object that as long as the content has been accurately translated the punctuation and paragraph structure are immaterial. However, I object: why must good translating exclude Steiner's often challenging punctuation and paragraph- and sentence-structure? George never shied away from this dilemma, as is apparent in his *Calendar of the Soul* translation.

In George's translation of *Calendar of the Soul*, he kept the line-count and content identical to the original German. Many of the other translators have not. Which method of translation stays true to Steiner's original intention? Ultimately you decide for yourself. But if you believe that content and form are not essential to attaining Steiner's message, then George's work will have no bearing on your meditative life. In George's defense, the Doctor said in his Teacher Conferences that when working with the *Calendar of the Soul* with students it is important to stress that it is not so much what is said, but "how one thought follows the next." Let us look at a pertinent example.

There is one particularly beautiful form in the first paragraph of the Philosophy of Freedom. The *Preface* starts with a nine-sentence paragraph which seems to reflect the members of the nine-fold human being. "A

feeling for form" is an innate capacity, said George in his manuscript on the Philosophy of Freedom. Other translators have ignored the importance of the nine-fold nature of this paragraph and combined various sentences to make the total count eight! In contemplating the nine-sentence version (identical in structure to the German original), see if you can feel your way into the incredibly subtle elements of its nine-fold "human form":

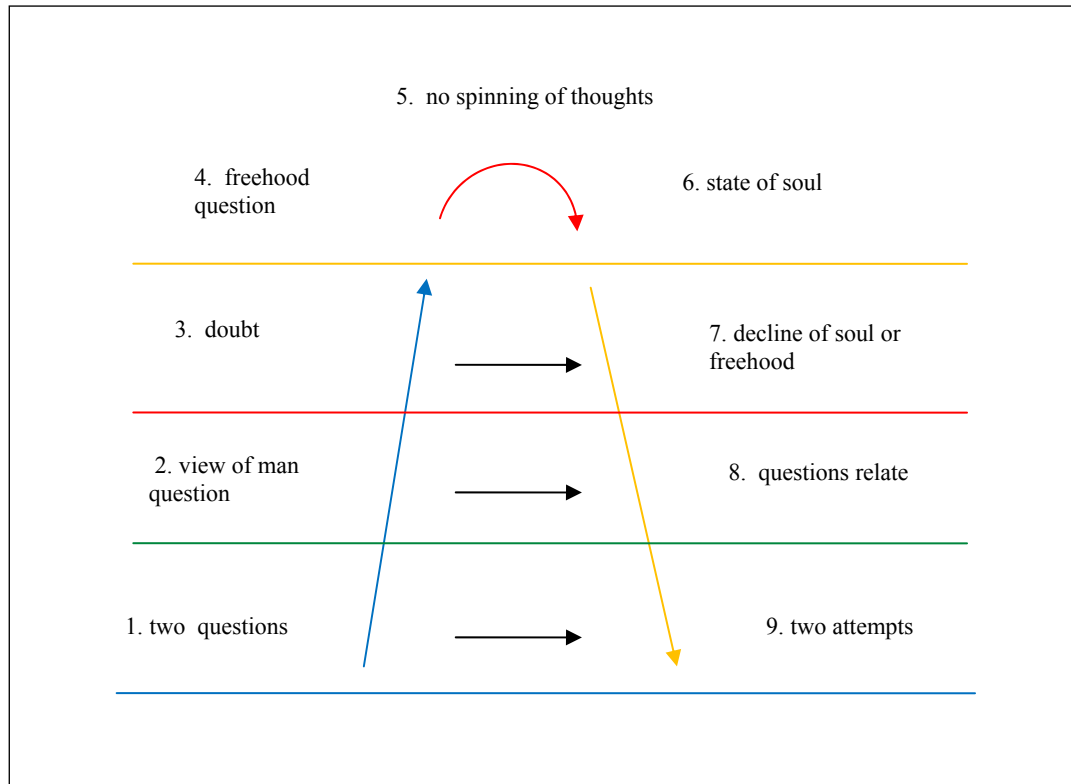
1. There are two root-questions of the human soul-life toward which everything is directed that will be discussed in this book. (physical body)
2. The first question is whether there is a possibility to view the human being in such a way that this view proves itself to be the support for everything else which comes to meet the human being through experience or science and which gives him the feeling that it could not support itself. (etheric body)
3. Thereby one could easily be driven by doubt and critical judgment into the realm of uncertainty. (soul body)
4. The other question is this: can the human being, as a creature of will, claim free will for himself, or is such freehood a mere illusion, which arises in him because he is not aware of the workings of necessity on which, as any other natural event, his will depends? (sentient soul)
5. No artificial spinning of thoughts calls this question forth. (intellectual soul)
6. It comes to the soul quite naturally in a particular state of the soul. (consciousness soul)
7. And one can feel that something in the soul would decline, from what it should be, if it did not for once confront with the mightiest possible earnest questioning the two possibilities: freehood or necessity of will. (spirit self)
8. In this book it will be shown that the soul-experiences, which the human being must discover through the second question, depend upon which point of view he is able to take toward the first. (life spirit)
9. The attempt is made to prove that there is a certain view of the human being which can

support his other knowledge; and furthermore, to point out that with this view a justification is won for the idea of freehood of will, if only that soul-region is first found in which free will can unfold itself. (spirit man)

What is the significance of this diagram? One sees that there are three main themes contained within three groups consisting of three sentences each. If we break it

what about a simple nine-fold human being without the interconnections?

The first sentence begins with the “root” questions, thus establishing the physical level of the nine-fold thought form. The etheric quality is captured in the “view of the human being” as a *method* of addressing life. The soul body is represented by “doubt” and “the realm of



down according to the three-fold human being, then we get: the body (the first question, sentences 1-3), the soul (the freehood question, sentences 4-6), and the spirit (the relation of the two questions, sentences 7-9). One could also divide the paragraph according to its inversion in sentence 5, where sentences 1 thru 4 present a description of the actual questions (the view of man and the possibility of freehood), while sentences 5 thru 9 list the conditions for answering the questions:

5. no thought spinning
6. right state of soul
7. confront freehood
8. take the right point of view,
9. if the soul-realm is found

If we continue to view the preface in terms of the nine-fold human being, we see the stark polarities between sentence 1 and 9 (two questions and two attempts), 2 and 8 (question of view and the reader’s response to the view), and 3 and 7 (doubt and feeling of decline). But

uncertainty.” The sentient soul quality comes out in the “necessity vs. free will” question - a very astral description. The intellectual soul related in sentence 5 ‘spins thoughts’ in endless logical thinking. True freehood arises only in the consciousness soul of sentence 6, “quite naturally.” The three higher members are given in “if /then” statements thus making them futuristic: The spirit self has to confront freehood. The spirit life has the correct view or mind. The spirit man has internalized the two questions in the realm where free will can unfold.

\*I have the greatest respect for Steiner’s translators. But in viewing the fine work of Lindeman, Poppelbaum, Stebbing, and Wilson, it seems they missed the importance of this nine-fold division. In fact, all of them combined sentence 2 and sentence 3, which is understandable in light of the fact that sentence 3 sounds intimately connected to sentence 2. Could their work have been different had they embraced George’s findings?

Let us compare their versions and see how the translators addressed this problem with sentence 3. The first version offered, from my recent translation of the *Philosophy of Freehood*, corresponds to the German original:

*My Version:*

2. The first question is whether there is a possibility to view the human being in such a way that this view proves itself to be the support for everything else which comes to meet the human being through experience or science and which gives him the feeling that it could not support itself. (etheric body)

3. Thereby one could easily be driven by doubt and critical judgment into the realm of uncertainty. (soul body)

*Lindeman:*

2. One question is whether a possibility exists of viewing the being of man in such a way that this view proves to be a support for everything else which, through experience and science, approaches him but which he feels cannot support itself and can be driven by doubt and critical judgment into the realm of uncertainty.

*Poppelbaum:*

2. One of these problems concerns the possibility of attaining to such a view of the essential nature of man as will serve as a support for whatever else comes to meet him by way of life or of science, which, he feels, cannot support itself and is liable to be driven, by doubt and criticism, into the realm of uncertainties.

*Stebbing:*

2. One of these problems concerns the possibility of attaining such insight into human nature that knowledge of man can become the foundation of all human knowledge and experience of life.

3. We often feel that our experiences and the results of scientific investigations are not self-supporting; further experiences or discoveries may shake our certitude.

*Wilson:*

2. One is: Is it possible to find a view of the essential nature of man such as will give us a foundation for everything else that comes to meet us – whether through life experience or through science – which we feel is otherwise not self-supporting and therefore liable to be driven by doubt and criticism into the realm of uncertainty?

What to do now? Translators need to come to some agreement about what role the paragraph- and sentence-counts play in Steiner’s work, or not. George left quite a legacy behind, so there can be no excuse for ignoring his research. To continue to neglect George’s work will result in many individuals coming to Anthroposophy searching for this new thinking and writing system, but never finding it because its active members are spell-bound by the mere content of Steiner’s work.

George’s observations should have been a turning point in the Anthroposophical movement. He cracked Steiner’s code and made it available to the public. He solved the riddle of how the heart-thinking of the *Philosophy of Freehood* could become a spiritual method analogous to the path in *Knowledge of Higher Worlds*. George did attain initiation, as he indirectly admits in his book, the

**IF YOU ARE INTERESTED TO LEARN MORE ABOUT THE PORTLAND BRANCH OF THE ANTHROPOSOPHICAL SOCIETY, PLEASE CALL DIANE RUMAGE AT (503) 908-0131.**

**THE PORTLAND BRANCH THANKS THE FOLLOWING MEMBERS AND FRIENDS FOR THEIR GENEROUS DONATIONS IN 2010!**

James Knight	Diane Rowley	Kathryn Foubister
Julie Foster	Ann Giere Krane	Cynthia Wiancko
Tish Johnson	Virginia Berg	Kathy Kremer
Chrystal Godleske	Diane Rumage	Wade Cavin
Robin Lieberman	Pamela Guettler	Ruth Klein
Tom Klein	Jannebeth Röell	James Lee
Donna Patterson	Bob Kellum	Valerie Hope
Chiaki Uchiana	Charles Forster	Antonella Henry
Patricia Campabello	Cheri Munske	Robin E. O’Brien
Yvonne De Maat	Cyndi Ashkar	Maria Demolder
Lourdes Smythe	Padeen Quinn	Sheila Wildfeuer
Valerie Hope	Samuel Bell-Stalnakar	Paul Haygood
Kim Lapre	Siegward Elsas	Mia Ellers
Betty Baldwin	Barbara Strong	

The *Portland Anthroposophic Times* is published twelve times a year by the Portland Branch of the Anthroposophical Society in America to serve members and friends in the wider anthroposophical community. Printed copies of the newsletter are available at the Takacs Clinic, Portland Waldorf School, Cedarwood Waldorf School, Shining Star and Swallowtail School. The newsletter and calendar are also posted on the Portland Branch website at [www.portlandbranch.org](http://www.portlandbranch.org).

Questions, suggestions and submissions may be sent by e-mail to [anthroposophy@earthlink.net](mailto:anthroposophy@earthlink.net). Items selected for publication in the Portland Anthroposophic Times may be edited for style, content and length. The deadline for submissions to the *Portland Anthroposophic Times* is the first day of each month for publication in that month’s edition. Submit calendar items to [branchcalendar@mindspring.com](mailto:branchcalendar@mindspring.com) no later than the first of each month for publication in the next edition.

Editor:	James Lee
Calendar:	Jannebeth Röell and Diane Rumage
Editorial Support:	Jannebeth Röell and Diane Rumage
Proofreading:	Diane Rumage
Communications:	Diane Rumage and Jannebeth Röell
Logistics:	Community Volunteers Like You
Website Services:	Seth Miller
Hardcopy Reproduction:	Kinko’s
Accounting:	Ruth Klein

**Please submit your Donations to the Portland Branch  
c/o Ruth Klein at 3609 SE Center, Portland, OR 97202**

Human Life, so he was certainly no slouch when it came to spiritual work.

What if George's approach had become a model for Anthroposophical branches? (George's commitment to this new thinking was so deep that his self-designed house had a special room for text-work study groups.) We would see, most likely, centers where preparation, enlightenment, and initiation are practiced and attained, where quality comes before quantity. With such a clear intention, Initiates might even volunteer at the branches to help novices by offering friendly advice as described in Knowledge of Higher Worlds. There would be a real spiritual and social reason to go to the branch. How is it that there seem to be no initiatic teachers in the Anthroposophical Society, and when there are, they seem to be ignored? There must be many initiates around the world?!

Heart-thinking, as George presented it to us, is *our beginning, it is the key to Steiner's work*. The structures inherent in heart-thinking give us flexible forms for the spiritual to be made concrete. Steiner's work begins to make sense after one reads George's work. He was the great interpreter.

By reclaiming the original form of the very first paragraph of the Philosophy of Freehood, maybe we can now begin to slowly reclaim the 'proper forms' of Anthroposophy - although we are all a little late in the game.<sup>1</sup> George understood that Anthroposophy is about preparation, enlightenment, and initiation; *about a wise generation leading a younger generation to spiritual enlightenment*. If this had been the case and a good number of us had attained initiation, we might today have a *real* Waldorf school, a three-fold social order, and even a Goetheanum that serves as a center for the 'science of initiation,' and not just the science of Goethe.

<sup>1</sup> There are several attempts in this direction. In Germany, Florin Lowndes has striven to maintain the integrity of Steiner's books by self-publishing his own German Complete Edition with heart-thinking diagrams. For English speakers I have self-published an experimental, heart-thinking translation of Steiner's Education of the Child called A Primer for Spiritually Thinking Educators. This translation has numbered paragraphs/sentences, and the correct punctuation. Compare mine to the current translation (Anthroposophical Press series) which has added punctuation (by the translator) and an altered paragraph-count! On a positive note for the Press, which has ignored O'Neil's work for over 50-years, they have agreed to publish my new heart-thinking Philosophy of Freehood a la O'Neil (and accompanying study guide) within the next year.

**Mark Riccio Ed.D.** graduated from The Rudolf Steiner School in Manhattan. In his study of Anthroposophy, he had the good fortune of having worked under the guidance of F. Teichmann and F. Lowndes. He has also studied Maori-style empathic body work with Noa Batlin of Honolulu and is currently

finishing a heart-thinking translation of the Philosophy of Freehood. ([www.organicthinking.org](http://www.organicthinking.org) has some of George's papers.)

## Anthroposophical Society's 2011 National Conference Portland!

The Annual General Meeting of the Anthroposophical Society in North America will be held in Portland on October 15, 16, and 17. As I have reported in the past, the Portland Branch is honored to be hosting the AGM during this jubilee year - the 150th anniversary of Rudolf Steiner's birth. The Portland Council has had an initial meeting with the national organizing committee, and all have agreed to take the question of the theme into our sleep lives during the holy nights. A working idea is in the direction of, "How is the world different because of what Rudolf Steiner brought; and what more needs to be done to fulfill our tasks for human development?" We are also asked to ponder this question for ourselves personally. Each of us can ask ourselves, "How is my life different for having met Rudolf Steiner, and what more am I called to do in my own development?"

We are following up on tantalizing possibilities for lecturers on this subject, and are connecting with some members who have been doing interesting work, even displays which can help to illuminate the questions we are exploring.

Some of the organizational areas to be taken up by community members: organization of an exhibit of art by members of our community and attendees from all over; organizing housing for out of towners; organizing transportation for out of towners; a registration table; flowers; setup; and takedown.

If you are inspired to help in any of these areas, or something else you've thought of, call Valerie Hope, 503-775-0778.

We are looking forward to keeping you informed as matters progress.

# Portland Anthroposophical Society Calendar - January 2011

## Ongoing Activities and Study Groups

### **Anthroposophical Course for Young Doctors, Study Group**

**1<sup>st</sup> Tuesday of the month 7-8:30 PM**

Pohala Clinic, 12050 SE Holgate Blvd.

Contact Julie Foster by phone at (503) 572-4196 or by e-mail at [julie@pohalaclinic.com](mailto:julie@pohalaclinic.com).

### **Karma Exercises and Study**

**1<sup>st</sup> and 3<sup>rd</sup> Thursdays at 7:00 PM**

NE Portland

The study group has just completed its multi-year work with the entire *Karmic Relationships* lecture cycle, and is now starting to work with Rudolf Steiner's karma exercises. Call James Lee for information 503 249-3804 or send an e-mail to him at [anthroposophy@earthlink.net](mailto:anthroposophy@earthlink.net).

### **Knowledge of the Higher Worlds**

**1<sup>st</sup> and 3<sup>rd</sup> Tuesdays 7:30 - 9:00 PM**

3046 NE 33rd Avenue, Portland, OR 97212.

Contact Donna Patterson and Bob Kellum at 503-331-7393.

### **Moms and Dads Parenting Group**

**2<sup>nd</sup> Mondays**

North Portland

This group is intended for parents of very young children wishing to connect through the inspiration of Rudolf Steiner's lectures and writings specifically regarding the incarnation and growth of the young child and how we can apply this wisdom to our modern day circumstances as parents. Meets for potluck and discussion 6:00 - 8:00PM at Rose Hip Preschool in North Portland, please contact Kristin Zay (formerly Kresch) for more information at 503-830-1003 or [heyheykk@gmail.com](mailto:heyheykk@gmail.com).

### **Mystery Dramas, with Speech-Formation Exercises**

**2<sup>nd</sup> and 4<sup>th</sup> Wednesdays**

7:30 - 9:00 PM, in SW Portland.

Currently working on the 2nd *Mystery Drama* by Rudolf Steiner, *The Soul's Probation*. No acting experience necessary, just a love of the Word. Contact Diane Ramage by e-mail at [drumage@comcast.net](mailto:drumage@comcast.net) or by phone at (503) 908-0131 for information.

### **Portland Waldorf School Community Choir**

**Friday morning from 8:45 - 10:15 am**

Portland Waldorf School, 2300 SE Harrison Street, Milwaukie in the Orchard room - whenever school is in session. Anyone in and outside the PWS community who enjoys singing songs through the seasons, across the centuries and around the world is very welcome, including drop ins. This event is free and a community builder. More information: Marion Van Namen (503) 956-4046.

### **Portland Youth Discussion Group**

At the moment the group is taking a break. Please contact Chrystal Godleske if you are interested in meeting again. [socialsculptor@gmail.com](mailto:socialsculptor@gmail.com).

### **Waldorf Education and Teacher Training**

Lectures and courses conducted throughout the year by the Micha-el Institute. Contact John Miles at 503/774-4946. [johncmiles@usa.net](mailto:johncmiles@usa.net).

## Events

### **The Threefold Social Order for Today and It's Future Development**

**JANUARY 20**

5239 SE Woodstock Blvd, Portland OR 97206, at 7-9PM

See website for details, [www.Micha-elInstitute.com](http://www.Micha-elInstitute.com)

Contact 503 774-4946 or email [johncmiles@usa.net](mailto:johncmiles@usa.net).

### **The Waldorf School as an Expression of the Threefold Social Order**

**JANUARY 27**

5239 SE Woodstock Blvd, Portland OR 97206, at 7-9PM

See website for details, [www.Micha-elInstitute.com](http://www.Micha-elInstitute.com)

Contact 503 774-4946 or email [johncmiles@usa.net](mailto:johncmiles@usa.net).

### **Rudolf Steiner's Life Story**

**JANUARY 31, 2011**

Portland Waldorf School, 2300 SE Harrison Street, Milwaukie 7:30 PM



In honor of the 150 anniversary of Rudolf Steiner's birth: a talk by Sherry Wildfeuer. Sherry Wildfeuer is the editor of the *Stella Natura* biodynamic planting calendar and a long-term coworker in Camphill Village Kimberton Hills (PA), an intentional community that includes adults with developmental disabilities. Sherry is an active member of the Anthroposophical Society and its Agriculture Section.

"Have you ever wondered how it was possible for one man to found Waldorf Education, Biodynamic Agriculture, the art of eurythmy, design the Goetheanum and many other buildings, renew the speech arts, teach sculpture and painting, edit Goethe's scientific writings, write four major plays and numerous books and verses, hold 6,000 lectures, and so on...?"

Through his life story, one can follow Rudolf Steiner's own path of development and gain a feeling for his humanity as well as his accomplishments. This talk is suitable for newcomers to the work of Steiner as well as long-time anthroposophists, and may well be of interest to Waldorf high school students who would like to know more about the founder of Waldorf education. Contact Cheri Munske [woolhorse@mindspring.com](mailto:woolhorse@mindspring.com)

### **The Meaning of Singing in our Time**

**FEBRUARY 2-3, 2011 6PM-9PM.**

1165 NW Monroe, Corvallis, OR



Explore the meaning of singing in our time with Christiaan Boele. Experience the freedom and joy of uncovering your singing voice! For all singers, for those who never thought they could sing, and for anyone seeking creative renewal! For more information, contact Julie Courtney at 541-754-0194 or [cjulie27@gmail.com](mailto:cjulie27@gmail.com) or visit:

[www.theschoolofuncoveringthevoice.blogspot.com](http://www.theschoolofuncoveringthevoice.blogspot.com)

Register before January 15<sup>th</sup>, by sending a check of \$80.00 payable to Christiaan Boele c/o: Julie Courtney, 1460 SW Allen, Corvallis, OR 97333.

### **The Tasks for Humanity at the Present Time.**

**Thursday, FEBRUARY 3**

5239 SE Woodstock Blvd, Portland OR 97206, at 7-9PM

See website for details, [www.Micha-ellInstitute.com](http://www.Micha-ellInstitute.com)

Contact 503 774-4946 or email [johncmiles@usa.net](mailto:johncmiles@usa.net).

### **Finding Purpose and Healing Through the 12 Senses**

**Saturday FEBRUARY 12**

3135 NE 17<sup>th</sup> Ave. Portland 97212, 10 AM-4 PM.

A workshop and potluck lunch (sense of taste) with Lynn Madsen. Our 12 senses - not only do we see, hear, taste, touch, and smell - we also balance ourselves on the earth, have a sense of well-being, and discern hearing into tones, language, along with concepts - using our senses more consciously provides powerful tools to discern life purpose and promote inner healing. This workshop will be filled with as many hands-on and dynamic exercises as time will allow, including several biography exercises, movement, and art.

Lynn Madsen, PhD, MD, is an anthroposophic and family physician, who also draws from her prior career as a PhD psychologist in her healing arts. Study of the 12 senses has become a vital component to her healing practice.

Cost: \$50. For reservations, call 971- 404-6862, or email [bewellmed@gmail.com](mailto:bewellmed@gmail.com).

### **First Class of the School of Spiritual Science**

**Sunday, FEBRUARY 13**

5919 SE Division St., Portland, OR 97207. Bothmer Hall. Blue card required - Discussion on Lesson 10 at 8:30 AM, class at 9:30 AM sharp. Lesson 11. Please contact Diane Rumage at (503) 908-0131

### **Portland Branch Council Meeting**

**Monday, FEBRUARY 14**

1304 SE Main Street, Portland, OR 97214.

7 PM - 9PM at the home of Chrystal Godleske. Phone 503-816-2440 All Branch members are welcome to attend.

### **Polarities**

**FEBRUARY 18- 20, 2011**

2300 SE Harrison Street, Milwaukie, Portland Waldorf School.

7-9 Friday, Sat. 9-11:30 AM & 1 - 3 PM, Sunday 9 - 11:30. Cost \$120 - \$160. A course exploring polarity and the space between, with Laura Summer, cofounder of the Free Columbia Art Course. Laura Summer's work can be found in private collections in the United States and Europe, has been exhibited at The National Museum of Catholic Art and History in New York City, and is on permanent exhibition at the Sekem Community in Egypt. Her work can be seen at the 345 Gallery in Hudson, NY and at the 78th Street Gallery in Sante Fe, NM [www.78thstreetgallery.com](http://www.78thstreetgallery.com).

Detailed information about the workshop at <http://www.portlandwaldorf.org>

### **The Soul's Probation--Scene V**

**FEBRUARY 20, 2011**

Bothmer Hall, 5919 SE Division St, Portland OR 97207, 7-8PM

Come see the Mystery Drama Group's presentation on Sunday in honor of Rudolf Steiner's 150th birthday. We are delighted to offer Scene V of the 2nd Mystery Drama by Rudolf Steiner to members and friends. Admission free. We will recite 2 poems in speech chorus: the 4th panel of the "Foundation Stone Meditation" by Rudolf Steiner, and "For Rudolf Steiner" by Arvia Mackaye Ege.

There will be an explanation of what has led up to Scene V, and what to expect in the scene, and then the actual performance. We are excited to share this with you, and hope you and your friends will come. Questions: Diane Rumage [drumage@comcast.net](mailto:drumage@comcast.net) 503 908-0131

### **Becoming more Effective Treating Cancer**

**FEBRUARY 25-27, 2011**

9100 Bathurst Street, Vaughan, ON L4J 8C7, Canada.

Annual conference of Canadian Anthroposophic Medical Association. Helping people with cancer, using mistletoe preparations and other modalities from Anthroposophic Medicine. Flyer: <http://www.anthromed.ca>

### **Dennis Klocek: The Soul Forces of Addiction**

**MARCH 4 - 5**

Friday, 7:30 PM, Saturday 9AM - 8:30PM

This weekend workshop will address the issue of the forces in the soul life of human beings that lead to addictive tendencies. The key is that in physiology all addictive impulses use the same "reward pathway" in the brain. This means that whether the addiction is to drugs, alcohol, money or a memorabilia collection, the pathway in the neurology is the same. It just so happens that this pathway is also a key to understanding the autistic spectrum from true low functioning autism to high functioning and gifted persons with Asperger's syndrome. Dennis Klocek will present the neurology of these pathways and the various modalities used to work with these symptoms in a Friday evening lecture. Then on Saturday the theory of miasm, the role of the arts, and the practice of meditation with symbols will be the focus of group exercises designed to enhance understanding of these important contemporary educational issues.

Cost will be \$75 for the entire workshop, \$20 for Friday Evening.

You can register online at the branch website, [Portlandwww.anthroposophy.org](http://Portlandwww.anthroposophy.org). For more information, or to register by telephone or mail contact Valerie Hope, 503-775-0778, 2606 SE 58<sup>th</sup> Ave Portland, OR 97206 Attn: Klocek workshop.

### **International Postgraduate Medical and Nurses Training**

**MAY 13-20, 2011**

101 San Antonio Rd, Petaluma, CA 94952

Fourth Annual! Sponsored by PAAM. New nursing certificate available. More information, and online registration on PAAM's website, [www.paam.net](http://www.paam.net).

### **Nineteen Lessons of the First Class**

**AUGUST 7-12, 2011**

9200 Fair Oaks Blvd., Fair Oaks, CA 95628

Tel 916-961-8727. The School for Spiritual Science would like to invite all members of the School to a conference of the nineteen lessons, to be held at 9200 Fair Oaks Blvd., Fair Oaks, CA 95628. Look for more information in the Anthroposophical Society's *Evolving News for Members and Friends*.


## **The Soul Forces of Addiction Dennis Klocek Workshop**

**Not to be Missed! March 4 & 5**

It is a rare and special occasion when Dennis Klocek comes to Portland for any reason. He has profoundly influenced many souls with his Goethean Studies and Consciousness studies programs, counted among them several of my own friends and family. Through countless workshops, lectures, and his wonderful website he has reached many more. We on the Council are therefore delighted that he has agreed to come to Portland in March to address the topic of addiction, one of the great scourges of our time. As we can easily see all around us and in ourselves, whether it be computer activities, drugs, smart phones, or any number of material pursuits, the distractions from our personal destinies and the destiny of all mankind are numerous and enticing. Here is how he describes his offering:

This weekend workshop will address the issue of the forces in the soul life of human beings that lead to addictive tendencies. The key is that in physiology all addictive impulses use the same "reward pathway" in the brain. This means that whether the addiction is to drugs, alcohol, money or a memorabilia collection, the pathway in the neurology is the same. It just so happens that this pathway is also a key to understanding the autistic spectrum from true low functioning autism to high functioning and gifted persons with Asperger's syndrome. Dennis Klocek will present the neurology of these pathways and the various modalities used to work with these symptoms in a Friday evening lecture. Then on Saturday the theory of miasm, the role of the arts, and the practice of meditation with symbols will be the focus of group exercises designed to enhance understanding of these important contemporary educational issues.

Cost will be \$75 for the entire workshop, \$20 for Friday Evening. You can register online at the branch website, [www.portlandanthroposophy.org](http://www.portlandanthroposophy.org). For more information, or to register by telephone or mail, and to inquire about senior and student rates contact Valerie Hope, 503-775-0778, mail 2606 SE 58<sup>th</sup> Ave Portland, OR 97206 Attn: Klocek workshop.



**Pohala**  
A Place for Healing

12050 SE Holgate Blvd.  
Portland, OR 97266  
503.572.4196

*Pohala* is a clinic that provides family primary care using anthroposophic medicine.

*Our Providers:*  
**Julie E Foster, MSN, FNP**  
www.pohalaclinic.com

## Waldorf Travel Service

*Incredible Journeys since 1975*

5316 SE Sherman St  
Portland, OR 97215



800-328-7266  
503-233-4053  
fax: 503-232-7224

Walter Rice, CTC, Travel Magician  
walter@waldorftravel.com

**Join one of our 2011 Incredible Journeys**

**February:** Crystal Cruises to New Zealand and Australia  
**October:** Iyengar Yoga Group to Northern India  
**November:** Africa-Namibia, Bostwana, Victoria Falls, Zambia

*We offer experienced expert travel planning for private travel, tours, cruises and customized groups. No matter how exotic or offbeat, we have probably been there!*



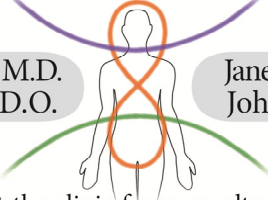
curative painting and collaborative psychotherapy for individuals and couples

**Robin Lieberman**  
MSW, LCSW

503.222.1192 robinlieberman.net


## Multi-Specialty Health Clinic

Debra Glasser, M.D.  
Joan Takacs, D.O.



Janel Guyette, M.D.  
John Takacs, D.O.


The Physicians at the clinic focus on alternatively extended medicine including Comprehensive Family Practice, Internal Medicine, and Physical Medicine and Rehabilitation. They utilize holistic principles that include the Anthroposophical world conception and its medical modalities, movement principles from Spacial Dynamics®, and refined hands-on techniques to augment alternative and mainstream medical approaches in diagnosis, treatment and prevention of illness and injury.



5909 SE Division Street  
Portland, OR 97206

www.anthroclinic.com

503-234-1531



## Transformative Arts

Art Exploration and Therapy for adults, teens, and children

Cheri Munske

503-484-4133    woolhorse@mindspring.com

**THIS SPACE IS AVAILABLE FOR YOUR CARD**

**SEND INQUIRIES TO**  
[anthroposophy@earthlink.net](mailto:anthroposophy@earthlink.net)

**EMBRYO IN MOTION: UNDERSTANDING OURSELVES AS EMBRYO**  
4-DVD SET NOW AVAILABLE WITH JAAP VAN DER WAL, PHD, MD

Normally \$100.00, this beautiful 4-DVD set that was professionally recorded live in Portland, OR, June 3-6, 2010, is on sale for \$75.00 through January 30th. To learn more about the 4-DVD set and for instructions on how to order it, go to the "shop" portal on the Portland Branch website at [www.portlandbranch.org](http://www.portlandbranch.org).

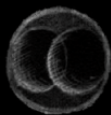
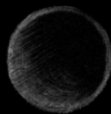


# Embryo In Motion

UNDERSTANDING OURSELVES AS EMBRYO

4 DVD Set

with Jaap van der Wal, PhD, MD



This seminar explores how human prenatal development expresses the essence of human spiritual unfoldment. Understanding the stages of embryological development provides a basis for therapeutic recognition of embryological forces in all later stages of life. This seminar is a rare opportunity to hear a world authority on modern embryology through a unique synthesis of scientific and spiritual principles.

On Sale Now!

Available exclusively at

**PORTLANDBRANCH.ORG**